

47 Haydn Avenue, Rusholme, Manchester, M14 4DJ

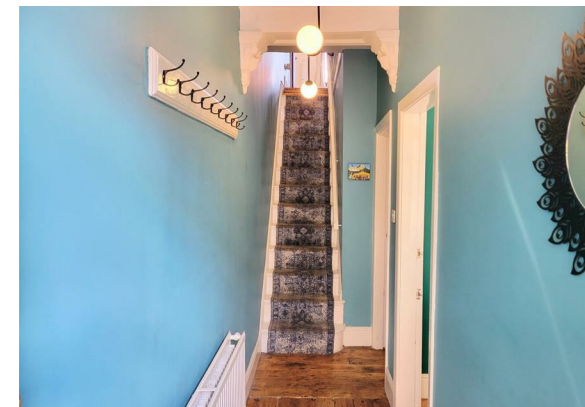


JP&Brimelow
ESTATE AGENTS

Offers In The Region Of £250,000

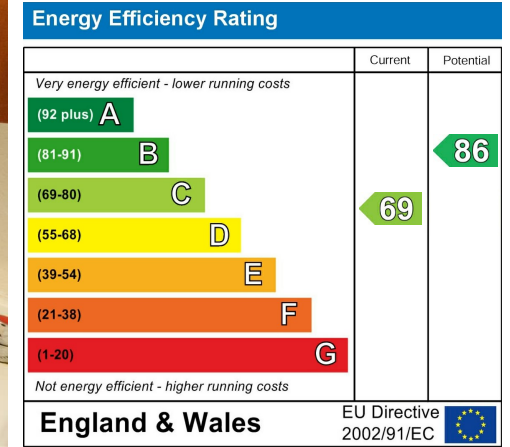
 3  1  2  C

VIDEO TOUR AVAILABLE An attractive and stylishly presented, THREE BEDROOM, mid terrace property. This Victorian period bay fronted property is located on a quiet and leafy road in Rusholme. This excellent location is just around the corner from Whitworth Park, home to the renowned Whitworth Art Gallery, its popular café, and playground. Walking distance to the Manchester Museum, recently crowned European Museum of the Year. Excellent access to public transport, the universities, hospitals, and city centre. A short walk from: local shops, schools, gyms, swimming pools and green spaces. In brief the property consists of; an entrance hall, a delightful lounge with a feature fireplace, and bay window. A large modern fitted kitchen, with lots of storage and integrated appliances. A dining area with access to the kitchen and access to the fully enclosed rear garden, which has an outhouse including a working lavatory which completes the ground floor. To the first floor there are three good sized bedrooms and a white three-piece bathroom suite. The property benefits from gas fired central heating, double glazing, high ceilings, stripped and varnished floorboards, and a rear enclosed garden. This house has been fully modernised but many of the original period features remain.





EPC Chart



Tenure: **Freehold** Council Tax Band: **A**

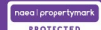
Ground Floor



First Floor



JP & Brimelow Estate Agents Ltd
430 Barlow Moor Road, Manchester, M21 8AD
Tel: 0161 8822233
E: sales@jpbrimelow.co.uk www.jpandbrimelow.co.uk



JP & Brimelow
ESTATE AGENTS

NOTICE: JP & Brimelow Estate Agents Ltd for themselves and for the vendors or lessors of this property whose agents they give notice that:

- (i) the particulars are set out as a general outline only for the guidance of intending purchasers or lessees, and do not constitute, nor constitute part of, an offer or contract;
- (ii) all descriptions, dimensions, references to the condition and necessary permissions for use and occupation, and other details are given in good faith and are believed to be correct but any intending purchasers or tenants should not rely on them as statements or representations of fact but must satisfy themselves by inspection or otherwise as to the correctness of each of them;
- (iii) no person in the employment of JP & Brimelow Estate Agents Ltd has any authority to make or give any representation or warranty whatever in relation to this property.

jpandbrimelowstateagents

@jpandbrimelow